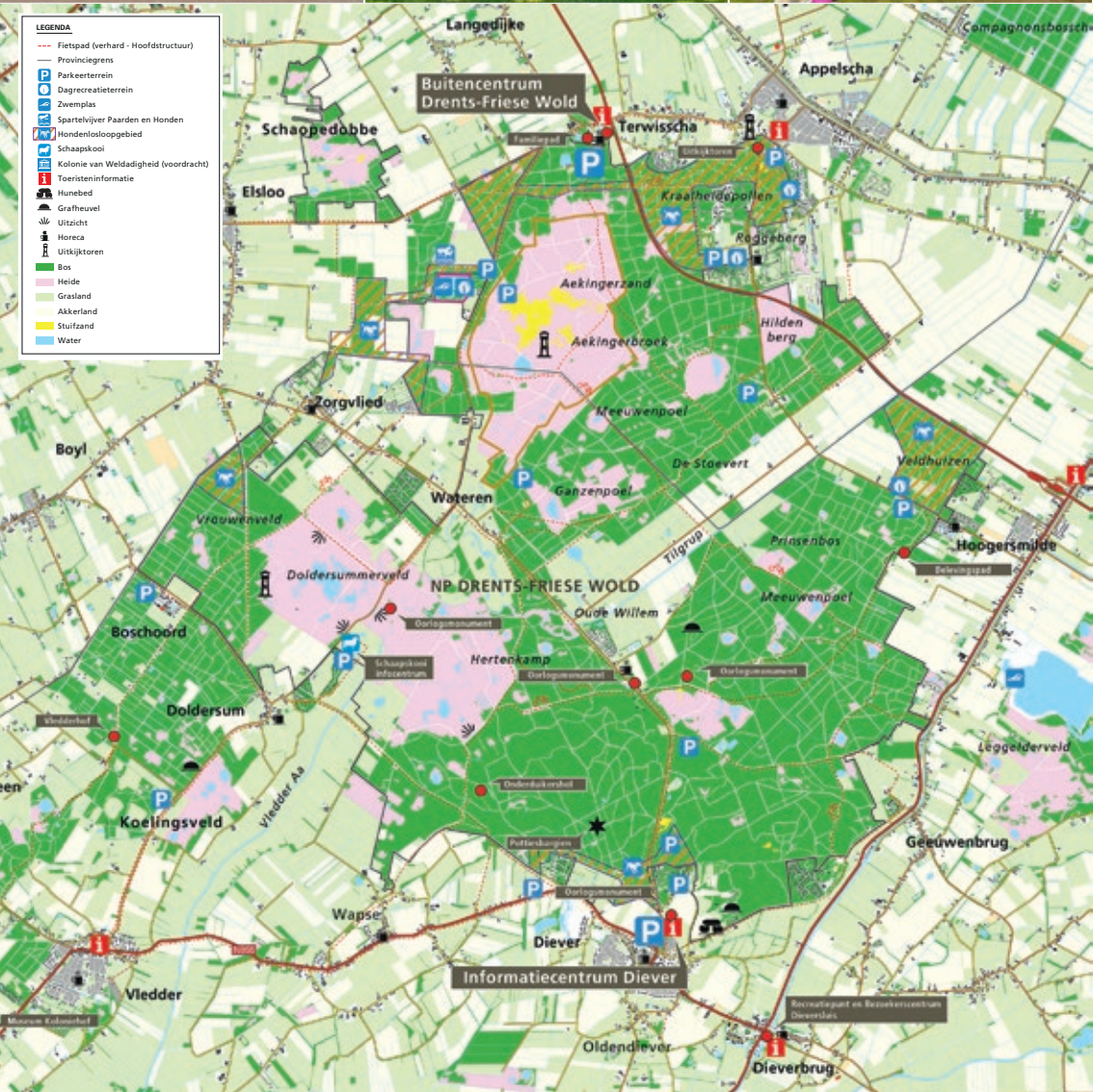




© Marius Visser



1. Buitencentrum Drents-Friese Wold

In addition to getting information, you can also actually experience the park with your senses; smell, hear and see the park, just like in the park itself. Furthermore, there are recreational routes, hospitality facilities and playing spots for kids.

OPENING TIMES April – October and during school holidays: Monday through Sunday from 10:00 to 17:00; November - March: Wednesday from 11:00 – 16:00, Sat and Sun from 10:00 to 16:00. Monday, Tuesday, Thursday and Friday closed. Closed on Christmas day, Boxing Day and New Year's Day.

2. Tourist information centre Diever

Here too you can get information on all the activities in the area.

OPENING TIMES May – October Monday through Saturday from 10:00 to 16:00; July and August Monday through Saturday from 10:00 to 17:00; November - April Monday through Friday 11:00 - 15:00 and also Saturday from 11:00 to 15:00

Hosts of the National Park

The hosts of the National Park also gladly provide you with information, they also have most of the folders available at any time. Hosts are entrepreneurs in the area who are ambassadors of the Drents-Friese Wold National Park. These businesses can be identified by their sign saying “Gastheer”.

Twitter Drents-Friese Wold:
Use #DrentsFrieseWold.
For questions and remarks use @NationaalparkDF or @Naarbuiten_DFW



Addresses

BUITENCENTRUM STAATSBOSBEHEER
6aTerwisscha, 8426 SJ Appelscha,
T: +31 (0)516 464020;
W: www.staatsbosbeheer.nl

NATUURMONUMENTEN
22 Benderse, 7963 RA Ruinen,
T: +31 (0)522 472951;
W: www.natuurmonumenten.nl

“HET DRENTSE LANDSCHAP”
FOUNDATION P.O. 83, 9400
AC Assen; T: +31 (0)592 313552;
internet: www.drentslandschap.nl

“MAATSCHAPPIJ VAN WELDADIGHEID”
FOUNDATION 8 Maj. Van Swietenlaan, 8382 CG
Frederiksoord; T: +31 (0)521 381225;
internet: www.mvwfrederiksoord.nl

TOURIST INFORMATION CENTRE
DIEVER 2a Bosweg, 9781 LE Diever
Telephone: +31 (0)521 59 17 48

SECRETARIAT REGIONAAL
LANDSCHAP DRENTS-FRIESE
GRENSSTREEK Province of Drenthe,
P.O. 122, 9400 AC, Assen
drents-friese-wold@drenthe.nl
telephone +31 (0)592-365555 (office hours)

Nationaal Park Drents-Friese Wold maakt deel uit van een netwerk van 20 nationale parken in Nederland.

Colophon
Graphics: province of Drenthe
Cartography: province of Drenthe
Text and photography: Nationaal Park
Translation: Dagnall Talen

© Secretariat Nationaal Park Drents-Friese Wold 2017



Nationaal Park
Drents-Friese Wold



The Drents-Friese Wold in a glance



*Wold zonder grenzen met een verrassende
variatie aan bos en stuifzand....*



The Drents-Friese Wold national park is one of the largest uninterrupted nature reserves in The Netherlands. It encompasses some 6150 hectares of forest and heathland right at the border of Friesland and Drenthe, particularly well-suited for hikes down footpaths and exploration by bike. In addition to being a national park, the Drents-Friese Wold is also a Natura 2000 site, which means that it's one of the most beautiful and most important nature reserves in Europe.

Varied nature

The vast forests of the Drents-Friese Wold originated in the 19th century. A large part of the vast heathlands and sand drifts were cultivated and subsequently millions of trees were planted. You'll find beautiful pine forests at the Berkenheuvel estate and the Dieverzand. Many fens and small patches of heathland were left untouched, including the Snoekveen and the Groote veen. In the south-western part of the area you will find two vast interconnected heathland areas called the Dolersummerveld and the Wapserveld. The Aekingerzand (locally called: "De Kale Duinen") in the Frisian part of the Drents-Friese Wold is a "living" sand-drift. Here the elements have a free hand. Species such as the sand lizard and the silver-spotted skipper thrive well in this environment. De forest creek the Vledder Aa, the "lifeline" of the park, originates in the Aekingerbroek and flows on in south-western direction. Here nature is in movement. In the central part of the park there is an area called the Oude Willem, a large area that was once in use as agricultural land. As of today, it's got a protected status as a nature reserve once again.



Environmental management through cooperation.

The Drents-Friese Wold is managed by four parties: Staatsbosbeheer, Vereniging Natuurmonumenten, St. Het Drentse Landschap and De Maatschappij van Weldadigheid. A small section of the area is privately owned. All of these parties are represented in a steering committee called Stuurgroep Regionaal Landschap. Their main tasks are the development of varied, natural forests and management of the heathlands and fens, guaranteeing proper reception of tourists and recreants and implementing a programme of communication and nature education. At the Doldersummerveld and the Wapserveld a herd of sheep and its shepherd make sure that grass and saplings don't get a foothold in the heather. Rough patches of heathland are turfed so that an open character is maintained.

Highlights Drents-Friese Wold

- 1. **Lookout tower Bosberg** – explore the vast forest in the North of the Netherlands from above (and while you're at it, also check out Fochteloërveen)! Entry fee € 2.00. www.bosbergtoren.nl
- 2. **Lookout tower Doldersummerveld** – unique view and prime spot for birdwatchers.
- 3. **Huenderweg** – here cattle and sheep roam free.
- 4. **Pine forests Berkenheuvel-Dieverzand** – typical top-quality Drenthe pine forests.
- 5. **Grenspoel in the Aekingerzand** – beautiful small fen, sand drifts and valley grasslands at a glance, with a lookout tower.



Teken

- Loop niet met blote benen door de begroeiing
- Speur uw lichaam na thuiskomst af op eventuele teken
- Verwijder teken met een teken tang (te koop bij de apotheek)
- Meer informatie op www.saag.nl

Op pad in de natuur

De beheerders van het Drents-Friese Wold hebben wandel- en fietspaden aangelegd, zodat u alle kanten op kunt. Het nationaal park is voor een deel een van origine nat gebied. Veel paden zijn vooral in het najaar en de winter erg nat. Laarzen of waterdichte schoenen zijn dan zeker nodig. De beheerders werken aan het herstel van de natuur, bijvoorbeeld door het weer uitgraven van slenken. Hier kunt u soms hinder van ondervinden. Wij vragen u om begrip voor deze – tijdelijke – situatie.



Hiking

- 130 kilometres of hiking routes spread over various tracks
- Paved Family route of 2.2 km, also suitable for wheelchairs, strollers, near the visitor centre in Appelscha and at the Bosberg
- Experience path Hoogersmilde

By bike

- Dozens of kilometres worth of biking paths (oyster shell paths, asphalt and concrete)
 - Two ATB-routes of 50 km combined
- By horse (and carriage)**
75 kilometres of signposted bridle paths and routes for covered wagons. The other paths are not open for horses. Horse parking place at the Buitencentrum and Hoogersmilde, Diever and Zorgvlied. Start: Buitencentrum, Vila Nova in Zorgvlied, Shakespeare Theatre in Diever and Natuurpoort Hoogersmilde.

More information

Flyers and hiking/biking maps on the area are available. The annual Natuurkrant (Nature Times) provides you with plenty of tips and information on guided tours. You can get these at the visitor centre and at the various recreational facilities. Check www.np-drentsfriesewold.nl for information on current activities and developments.

Lookout towers

- Lookout towers Doldersummerveld
- Lookout towers Aekingerzand
- Lookout towers Bosberg
- For opening hours check www.bosbergtoren.nl
Entry fee: € 2.00

Outdoor activities

- Dozens of guided nature tours per year
- Many activities for kids

